

Poster presentation

Open Access

The formation of a Ca²⁺-dependent complex of C-reactive protein and very low density lipoprotein causes the biphasic transmittance waveform

Michael Nesheim*¹, John Samis², John Walker¹, Timothy Fischer^{3,5}, Liliana Tejidor³, Greg Jones³, Wim Houdijk³, Alan Giles³, Lev Becker¹, Marlys Koschinsky¹, Richard Wenstone⁴, Colin Downey⁴ and Cheng Hock Toh⁴

Address: ¹Department of Biochemistry, Queen's University, Kingston, Ontario, Canada, K7L 3N6, ²Department of Pathology, Queen's University, Kingston, Ontario, Canada, K7L 3N6, ³Organon Teknika Corporation, Durham, NC 27712, USA, ⁴Department of Haematology, Royal Liverpool University Hospital, Liverpool, L7 8XP, UK and ⁵Ventana Medical Systems, Tucson, Arizona, USA

Email: Michael Nesheim* - nesheim@medecine.unige.ch

* Corresponding author

from 3rd International Conference on cGMP Generators, Effectors and Therapeutic Implications
Dresden, Germany. 15–17 June 2007

Published: 25 July 2007

BMC Pharmacology 2007, 7(Suppl 1):P42 doi:10.1186/1471-2210-7-S1-P42

This abstract is available from: <http://www.biomedcentral.com/1471-2210/7/S1/P42>

© 2007 Nesheim et al; licensee BioMed Central Ltd.

Clinical background

The "biphasic transmittance waveform" (BTW) refers to a time-dependent decrease in light transmittance that often occurs prior to clotting when performing the activated partial thromboplastin time (aPTT) assay with plasmas of critically ill patients on the MDA[®] coagulation analyzer [1]. Early observations showed an association of the BTW

with disseminated intravascular coagulation (DIC) and clinical outcome. (See Table 1) The magnitude of the BTW was assessed against in-patient mortality. A total of 346 patients were found to have a BTW on admission to the ITU with a mortality rate of 44%, as compared with 26% for those with normal waveforms. A stepwise increase in the likelihood of mortality was directly correlated with the

Table 1: CRP by indicators of social class in VERA.

				p*
Education (years)	≤9	10–12	≥13	
CRP (mg/L) crude	1.20	1.07	0.98	0.0001
adjusted§	1.14	1.13	1.10	0.56
Occupation# (status)	a	b	c	
	1.13	1.13	1.04	0.04
	1.15	1.17	1.08	0.12
Household income (DM)	≤2000	2–3000	≥3000	
	1.19	1.11	1.06	0.002
	1.20	1.09	1.10	0.02

#a = worker and farmers, b = clerks and civil servants, c = employers, freelancer

*p for difference between upper and bottom category

§adjusted for age, sex, smoking status, BMI, physical activity, and HDL-cholesterol

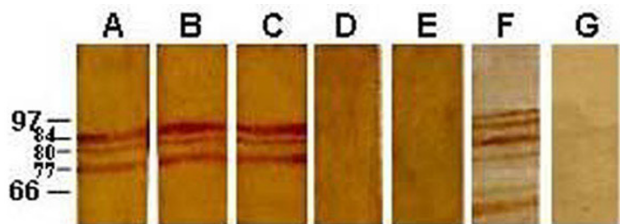


Figure 1
 Immunoblot of monoclonal antibodies against IROMPs of *A. baumannii* ATCC 19606 Immunoblot of Monoclonal antibodies with OMP of *A. baumannii* grown in CDM-Fe medium. Molecular Weight markers were marked in kDa. Lane **A**. 2G₈ABIR; **B**. 3D₅ABIR **C**. 1D₁₁ABIR **D**. 5D₆ABIR **E**. 1F₇ABIR **F**. +ve control **G**. -ve control.

degree of drop in light transmittance observed on admission (see Figure 1). The mortality fraction was 0.3 in those with normal waveforms versus 0.6 when the light transmittance decreased by 30%.

Conclusion

Detection and analysis of an atypical biphasic aPTT clot waveform is a strong and early predictor of clinical outcome in patients admitted to the ITU. The formation of lipoprotein-complexed C-reactive protein (LC-CRP) is the biochemical basis of the biphasic waveform seen in these patients.

References

1. Downey C, Kazmi R, Toh CH: **Early identification and prognostic implications in disseminated intravascular coagulation through transmittance waveform analysis.** *Thromb Haemost* 1998, **80**:65-69.

Publish with **BioMed Central** and every scientist can read your work free of charge

"BioMed Central will be the most significant development for disseminating the results of biomedical research in our lifetime."
 Sir Paul Nurse, Cancer Research UK

Your research papers will be:

- available free of charge to the entire biomedical community
- peer reviewed and published immediately upon acceptance
- cited in PubMed and archived on PubMed Central
- yours — you keep the copyright

Submit your manuscript here:
http://www.biomedcentral.com/info/publishing_adv.asp